



Replacement Parts List No. 700052200
Revision L 08/2021

Daikin

**SmartSource[®] Compact Vertical
Water Source Heat Pump**

WGCV
024, 030
Design 1

Contents

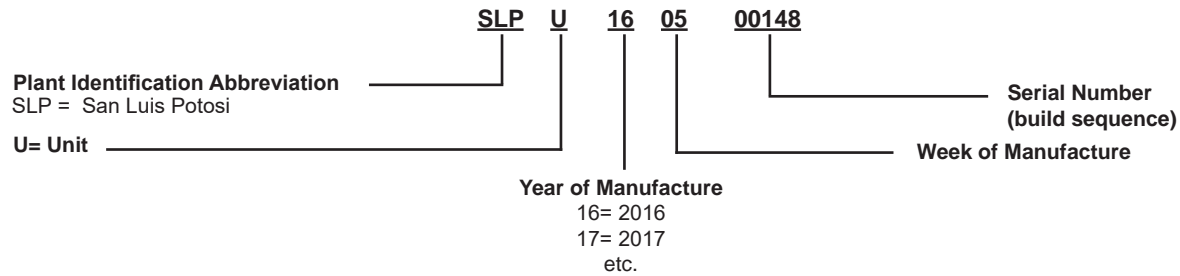
Parts List Revision History	3
Nomenclature	
Serial Number	4
Model Number	4
Electrical Legend	5
Blower Fan Assembly	
PSC Motor, Housing & Wheel: Code 10= P	6
EC Motor, Housing & Wheel: Code 10= C, T	7
Refrigeration Circuit	
Diagrams	8
Components	9, 10
Hot Gas Reheat (HGRH)	10
Control Box	
Microtech III Controls	
Diagrams	11
Components	12
MTIII Control Board Label Location	13
Field Installed Accessories	14- 18
Critical Parts List	CPL1

Parts List Revision History

Revision	Date	Description
NEW	06/16	New.
A	07/17	<p>Page 6, 7: Delete fasteners p/ns 04929302, 105915405, 802012067, and 06652401.</p> <p>Page 8: Change Compressor Mounting Detail drawing.</p> <p>Page 9: Change Sleeve p/n 060623401 to WB1044. Add Washer p/n 040500322. Add Compressor Blanket p/n 669280501.</p> <p>Page 11: Add drawing of "No PSC Used". Add C01 Bub# 72.</p> <p>Page 12: Change EWT Sensor p/n 910121228 to 910121231. Chart redone without voltage columns.</p> <p>Page 14: Add Thermostats & Sensor p/ns 668375301, 668375401, 667720401, and 107096010.</p> <p>Page 15: Delete EWT sensor p/n 91012131 and add WSE Coil Assy p/n 670213500. Add Hydronic Coil Assy p/n 670226003.</p> <p>Page 16: Add "Auto Flow Supply and Return w/Ball Valves and Strainer" p/ns for 3 foot hose kits.</p> <p>CPL1: Update revision. Delete EWT, LWT Sensor p/n 910121228.</p>
B	12/17	<p>Page 9: Change low pressure switch to 910171267.</p> <p>Page 10: Add HGRH Diagram.</p> <p>Page 14- 16: Numerous changes to Field Installed Accessories. Add sensor adapter plates, sensors, and touch screen thermostats. Change Manual Valve p/ns 10605110 & 106065102 to 10605210 & 106065202. Add Jumper Hose p/n 669483201.</p> <p>CPL1: Update revision.</p>
C	01/18	<p>Page 12: Change contactor p/n 910140339 to 910199932.</p> <p>CPL1: Update revision.</p>
D	09/18	<p>Page 4: Change Code 21 to Always 0.</p> <p>Page 6, 7: Change Housing & Wheel Assy p/n 670227700 to 670227702.</p> <p>Page 8- 10: Add Comp Mount Bub #s 63-68 and p/ns 9101741254, 910174125, 910174126, 910174127 & 910174128. Add Bub # 74 Adapter p/n 106474901. Delete Rev Valve p/n 106694112. Change Rev Valve p/n 106694207 to 910198409 & Solenoid p/n 910124938 to 910198415.</p> <p>Page 11: Add page for HGRH components.</p> <p>Page 13: Change Contactor p/n 910140339 to 910199934.</p> <p>Page 14- 18: Numerous format changes. Change Filters from Kit #s to individual p/ns. Delete Tstat p/ns 668375301 & 668375401. Add page.</p> <p>CPL1: Update revision. Change Housing & Wheel Assy p/n to 670227702.</p>
E	10/18	<p>Page 13: Add footnote for disconnect switch and delete unit size. Change contactor p/n 910140340 to 910199932. Change unit size for capacitor Ref #s 68 & 72.</p> <p>CPL1: Update revision.</p>
F	02/19	<p>Page 6: Change 1/3HP motor 208/230V p/n 669484208 to 910182951. Change 1/3HP motor 265V p/n 669484209 to 910182952.</p> <p>CPL1: Update revision.</p>
G	03/19	<p>Page 6: Add motor arm p/n 910163977 & band p/n 910121966 for 208/230V mtrs after 3/19. Add 208/230V mtr for belly band p/n 910234773 (024) & 910234777 (030).</p> <p>CPL1: Update revision. Add 1/3HP motors for 208/265V.</p>
H	05/19	<p>Page 6: Delete PSC motor dwg without belly band & add motor mount detail. Delete 030 motor 208/230V p/n 669484208 & 265V p/n 669484209. Change 024 motor 265V p/n 669484221 to 910234771; 669484222 to 910234772; and 910182952 to 910234774.</p> <p>Page 6: Add new motor mount detail dwg.</p> <p>Page 9: Change fitting p/n 910170469 to 910154735.</p> <p>Page 10: Move HGRH from page 11. Add Coil Assy, LH 024 p/n 670209917 & 030 p/n 670209916.</p> <p>Page 15- 19: Add compressor blanket kit p/n 910221738. Change H-8 Harness p/n 910107989 to 910255908 and 10 pack p/n 910145646.</p> <p>CPL1: Update revision.</p>
J	07/20	<p>Page 10: Updated p/n for Ref. 520 Reheat Valve, was 910169654, and Ref. 530 Solenoid, was 910110439.</p> <p>CPL1: Update revision.</p>
K	04/21	<p>Page 4: Added option SD to Code 12.</p> <p>Page 6: Updated p/n for Ref. 320 Blwr Hsg & Wheel Assy- 4/18 & later, was 670227702.</p> <p>CPL1: Updated p/n for Blwr Hsg Assy, was 670227702. Update revision.</p>
L	08/21	<p>Various: Corrected misc. formatting, spelling, & footnote issues.</p> <p>Page 6: Rewrote pg. header & updated the TOC.</p> <p>Page 7: Rewrote pg. header & updated the TOC. Changed "ECM Motor" to "EC Motor".</p> <p>CPL1: Add TXV p/ns. Update revision.</p>

Nomenclature

Serial Number



Model Number

	W	G	C	V	0	2	4	E	1	R	T	G	M	P	B	0	0	1	0	0	0	S	5	0	0	0
Code	01 - 03	04	05	06	07	08	09	10	11	12	13	14	15	16	17	18	19	20	21							

Code 01: Unit Type

W= Water Source Heat Pump

Code 02: Model Type

GC= SmartSource, Compact Single Stage

Code 03: Configuration

V= Vertical

Code 04: Unit Size

024= 24000 BtuH Nominal Cooling

030= 30000 BtuH Nominal Cooling

Code 05: Voltage

E= 208-230/60/1

J= 265/60/1

F= 208-230/60/3

K= 460/60/3

Code 06: Design Series

1= Design Series 1

Code 07: Return/Discharge Air

LT= Left Hand Return/Top Discharge

RT= Right Hand Return/Top Discharge

Code 08: Water Coil Type

C= Copper Inner Tube

S= Cupro-Nickel Inner Tube

G= Geothermal- Copper Inner Tube

J= Geothermal- Cupro-Nickel Inner Tube

Code 09: Unit Control

M= Microtech III Base Controller

L= Microtech III Base Controller with Lon

B= Microtech III Base Controller with BACnet

F= Microtech III Integrated System

Code 10: Fan Motor

P= PSC

C= ECM Constant CFM

T= ECM Constant Torque

Code 11: Insulation (Compressor Side / Airside)

B= Basic Standard- Fiberglass/Fiberglass

I= IAQ- Closed Cell Foam/Closed Cell Foam

D= Sound Package- Dual Layer Fiberglass/Dual Layer Fiberglass

F= Sound Blanket- Basic Standard- Fiberglass/Fiberglass

G= Sound Blanket- IAQ- Closed Cell Foam/Closed Cell Foam

H= Sound Blanket- Fiberglass/Dual Layer Fiberglass

Code 12: Options

WE= Waterside Economizer

HG= HGRH

HH= Hydronic Heat

SD= Simplified Dehumidification

00= None

Code 13: Filters & Racks

1= Standard 1" Rail 1" Filter, Throwaway

2= 2" Rack- 2" Filter, MERV 8

3= 2" Rack- 2" Filter, Throwaway

4= 4" Rack- 4" Filter, MERV 13

5= 4" Rack- 2" Filter, Throwaway

Code 14: Piping Package

0= None

Code 15: Electric Heat Size

0= None

P= 24V Single Stage Control

Code 16: Freeze Fault Protection

0= None

F= Freeze Fault Protection

Code 17: Standard or Special

S= Standard

X= Special

Code 18: Transformer

50= 50 VA Transformer

75= 75 VA Transformer

Code 19: Corrosion Protection

0= None

C= Corrosion Protection

Code 20: Disconnect Switch

0= None

D= Disconnect Switch

Code 21: Always 0

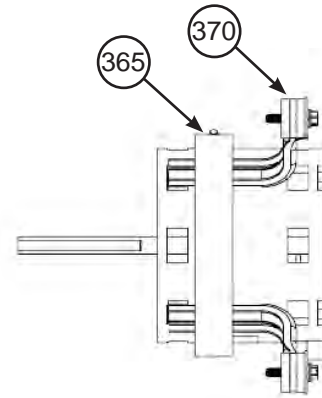
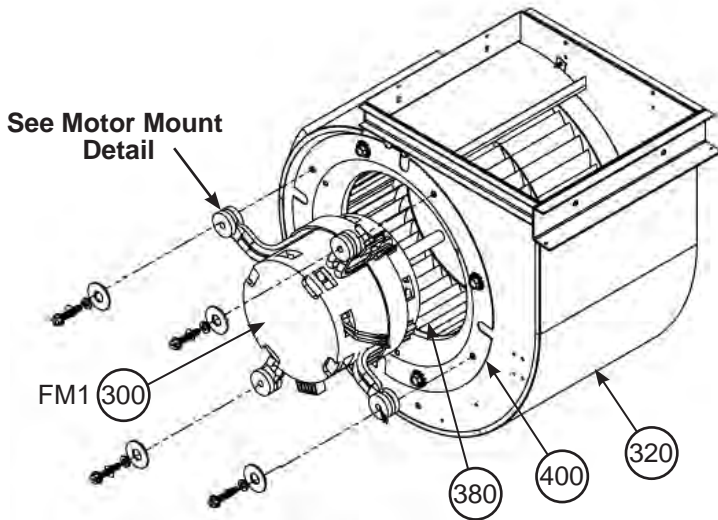
Code 22: Extended Warranty

Electrical Legend

AN1, AN2	LED Annunciator
CO1	Fan Motor Capacitor 1
C11	Compressor Capacitor 1
CP1	Compressor 1
COE	Condensate Overflow Protection Sensor - WSE
COS	Condensate Overflow Protection Sensor
DAT	Discharge Air Temperature Sensor
DCS	Disconnect Switch
EB1	Expansion Control Board 1
EB2	Expansion Control Board 2- Fan Speed Control
EWT	Entering Water Temperature Sensor
FM1	Fan Motor 1
GND	Ground
HG1	Hot Gas Reheat Valve Actuator
HP1	High Pressure Switch
HYH	Hot Water Heat Valve Actuator
LAT	Leaving Air Temperature Sensor
LP1	Low Pressure Switch
LT1	Compressor Suction Line Temperature Sensor
LWT	Leaving Water Temperature Sensor
M01	Fan Motor Contactor
M11	Compressor 1 Contactor
MCB	Main Control Board
NCB	Network Control Board
OLP	Overload Protector - Compressor Motor
RAT	Return Air Temperature Sensor
RV1	Reversing Valve
TR1	Transformer - Control
TR2	Transformer - Fan Motor
WSE	Waterside Economizer Actuator

Blower Fan Assembly

PSC Motor, Housing & Wheel: Code 10= P



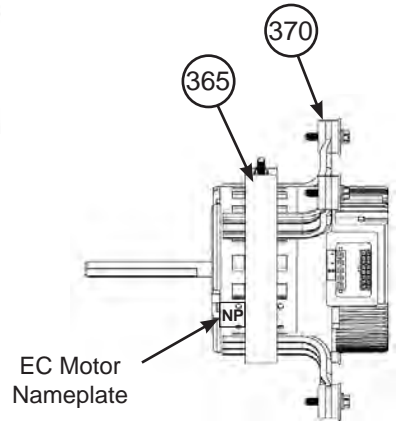
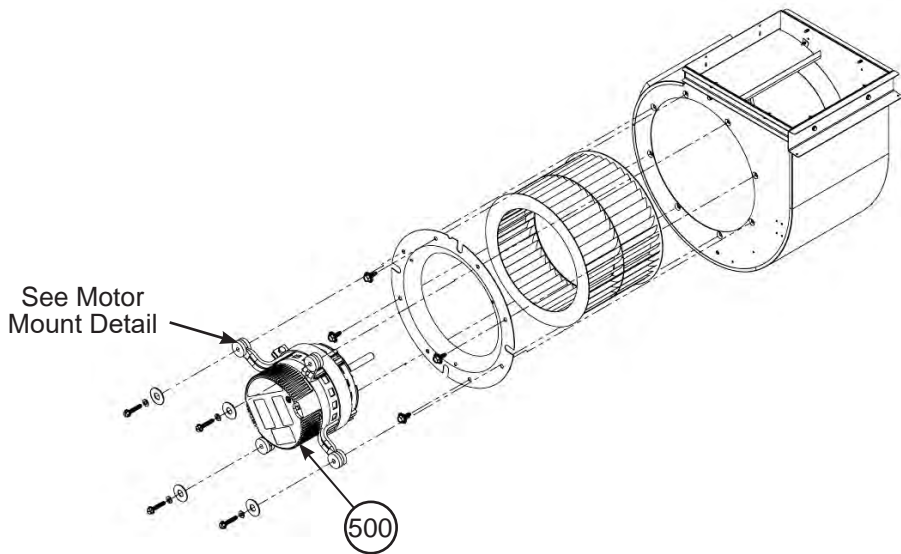
Motor Mount Detail

Ref. No.	Part Description	Part Number	024				030				
			208-230/60/1	208-230/60/3	265/60/1	460/60/3	208-230/60/1	208-230/60/3	265/60/1	460/60/3	
300	Motor, 1/5 HP	until 3/19	669484220	1	1						
	Motor, 1/5 HP ¹	3/19 & later	910234773	1	1						
	Motor, 1/5 HP	until 3/19	669484221			1					
	Motor, 1/5 HP ¹	3/19 & later	910234771			1					
	Motor, 1/5 HP	until 3/19	669484222				1				
	Motor, 1/5 HP ¹	3/19 & later	910234772				1				
	Motor, 1/3 HP	until 3/19	910182951					1	1		
	Motor, 1/3 HP ¹	3/19 & later	910234777					1	1		
	Motor, 1/3 HP	until 3/19	910182952							1	
	Motor, 1/3 HP ¹	3/19 & later	910234774							1	
	Motor, 1/3 HP	until 3/19	669484210								1
	Motor, 1/3 HP ¹	3/19 & later	910234776								1
320	Blower Housing Assy	until 4/18	670227700	1	1	1	1	1	1	1	1
	Blower Housing Assy	4/18 & later	Q670212113	1	1	1	1	1	1	1	1
365	Band, Motor Mount	3/19 & later	910121966	1	1	1	1	1	1	1	1
370	Arm, Motor Mount	3/19 & later	910163977	4	4	4	4	4	4	4	4
380	Wheel, Blower		802000037	1	1	1	1	1	1	1	1
400	Inlet Ring		060828801	1	1	1	1	1	1	1	1

¹ This motor uses a band & arm motor mount.

Blower Fan Assembly

EC Motor, Housing & Wheel: Code 10= C, T

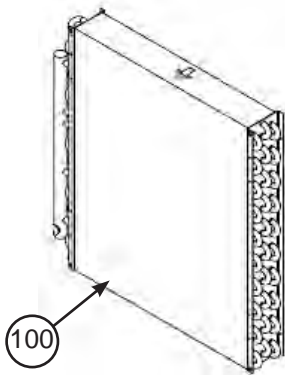


Motor Mount Detail

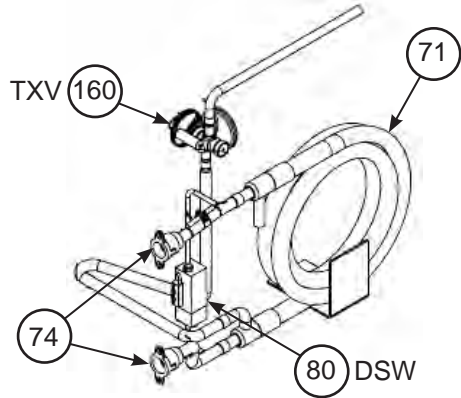
Ref. No.	Part Description	Part Number	Unit Size	
			024	030
365	Band- Motor Mount	910121966	1	1
370	Arm- Motor Mount	910163977	4	4
500	EC Motor & Program	1	See EC motor nameplate.	

¹ The p/n for the EC Motor is found on the label (see illustration above).
 You may also contact Daikin with the Unit Model & Serial Number to get the EC Motor part number.

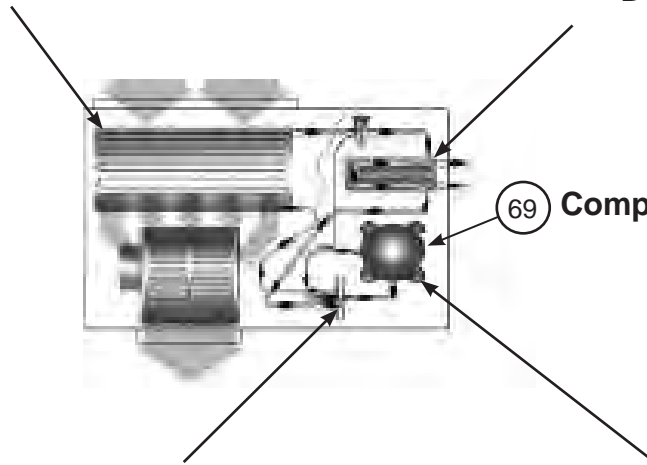
Refrigeration Circuit Diagrams



Evaporator Detail

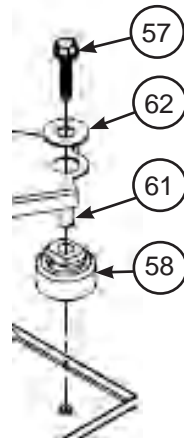


CO-AX HEAT EXCHANGER Detail

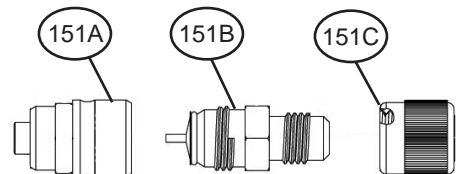
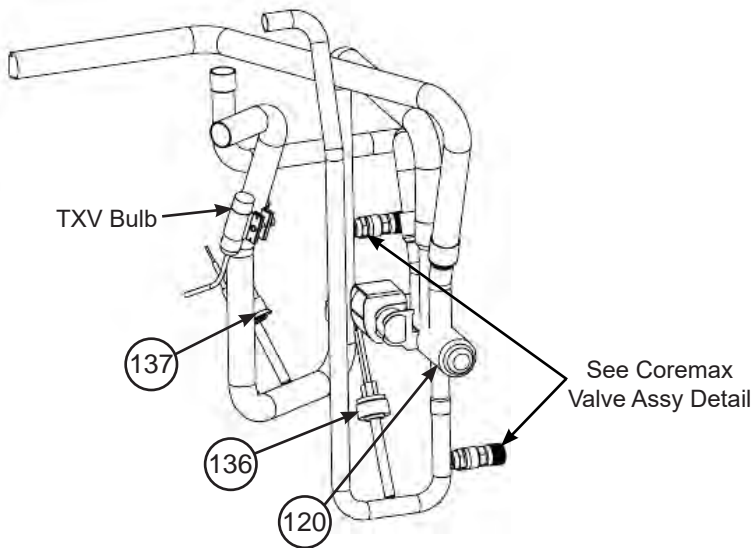


Compressor

Reversing Valve Piping Detail



Compressor Mounting Detail



Coremax Valve Assy Detail

Refrigeration Circuit Components

Ref. No.	Description	Part Number	024				030			
			208-230/60/1	208-230/60/3	265/60/1	460/60/3	208-230/60/1	208-230/60/3	265/60/1	460/60/3
57	Screw, Compressor Mount	910155795	4	4	4	4	4	4	4	4
58	Grommet, Compressor Mount	4RHZ9154	4	4	4	4	4	4	4	4
61	Sleeve, Compressor Mount until 7/16	060623401	4	4	4	4	4	4	4	4
	Sleeve, Compressor Mount 7/16 & later	WB1044	4	4	4	4	4	4	4	4
62	Washer, Compressor Mount	040500322	4	4	4	4	4	4	4	4
69	Compressor	668392101	1							
	Compressor	910124566		1						
	Compressor	668392102			1					
	Compressor	669816402				1				
	Compressor	669816403					1			
	Compressor	669816405						1		
	Compressor	910125402							1	
	Compressor	669816404								1
N/S	Compressor Blanket	669280501	1	1	1	1	1	1	1	1
71	CO-AX Heat Exchanger, Copper Inner Tube	669814137	1	1	1	1				
	CO-AX Heat Exchanger, Copper Inner Tube	669814138					1	1	1	1
	CO-AX Heat Exchanger, Cupro Inner Tube	910170633	1	1	1	1				
	CO-AX Heat Exchanger, Cupro Inner Tube	910170635					1	1	1	1
74	Adapter	910154735	2	2	2	2	2	2	2	2
80	Differential Pressure Switch	910170469	1	1	1	1	1	1	1	1
100	Evaporator Coil Assy, LH ¹	670211316	1	1	1	1	1	1	1	1
	Evaporator Coil Assy, RH ¹	670211311	1	1	1	1	1	1	1	1
120	Reversing Valve until 11/17	910125412	1	1	1	1	1	1	1	1
	Reversing Valve 11/17 & later	910198413	1	1	1	1	1	1	1	1
N/S	Solenoid- Reversing Valve until 10/17	106694207	1	1	1	1	1	1	1	1
	Solenoid- Reversing Valve 10/17 & later	910198415	1	1	1	1	1	1	1	1
136	High Pressure Switch	910171269	1	1	1	1	1	1	1	1
137	Low Pressure Switch until 9/16	107225101	1	1	1	1	1	1	1	1
	Low Pressure Switch 9/16 & later	910171267	1	1	1	1	1	1	1	1
151A	Seat, Fitting	910158114	2	2	2	2	2	2	2	2
151B	Core, Valve	668188701	2	2	2	2	2	2	2	2
151C	Cap, Valve	668189501	2	2	2	2	2	2	2	2

N/S= Not shown on diagram.

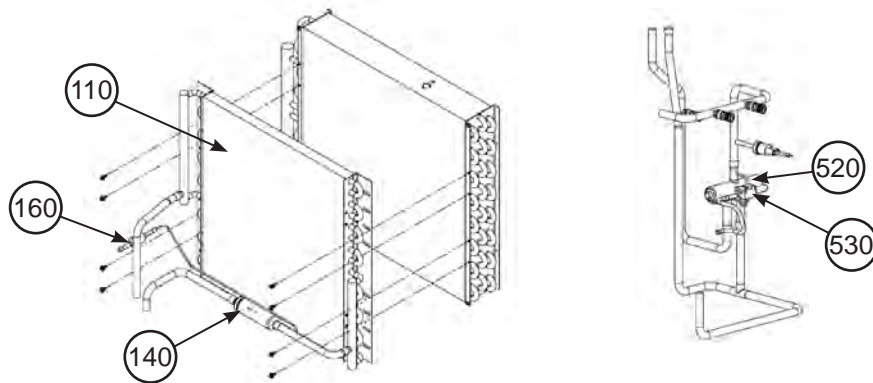
¹ Please contact Daikin for E-Coat on evaporator coil assy.

Refrigeration Circuit Components, Continued

Ref. No.	Description	Part Number	024				030			
			208-230/60/1	208-230/60/3	265/60/1	460/60/3	208-230/60/1	208-230/60/3	265/60/1	460/60/3
160	Expansion Valve	910156333	1	1	1	1				
	Expansion Valve	910157449					1	1	1	1
N/S	Drain Pan, LH	670212810	1	1	1	1	1	1	1	1
	Drain Pan, RH	670212801	1	1	1	1	1	1	1	1
	Terminal Ring- Condensate Overflow Wire	802007936	1	1	1	1	1	1	1	1
N/S	Gasket, Vinyl Edging, 10.69"	910155307	1	1	1	1	1	1	1	1

N/S= Not shown on diagram.

Hot Gas Reheat (HGRH)



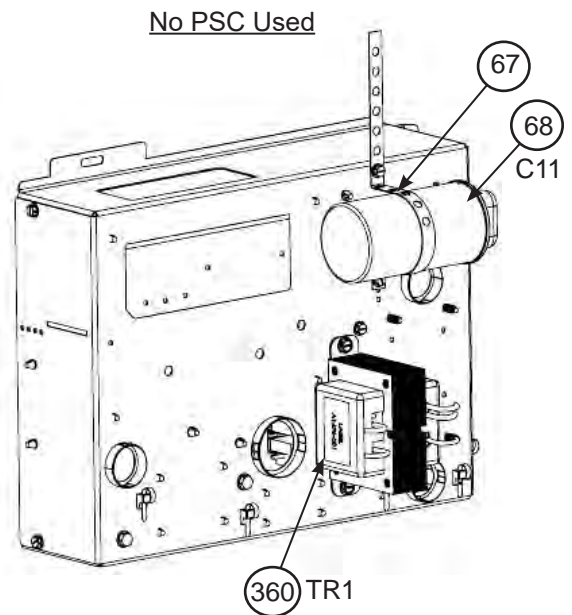
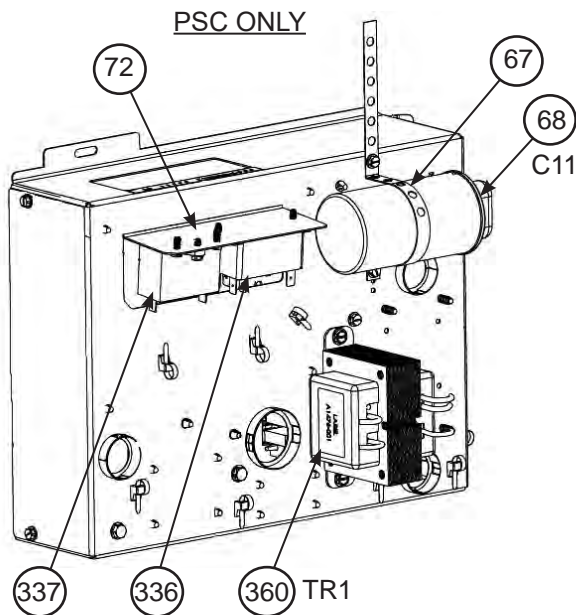
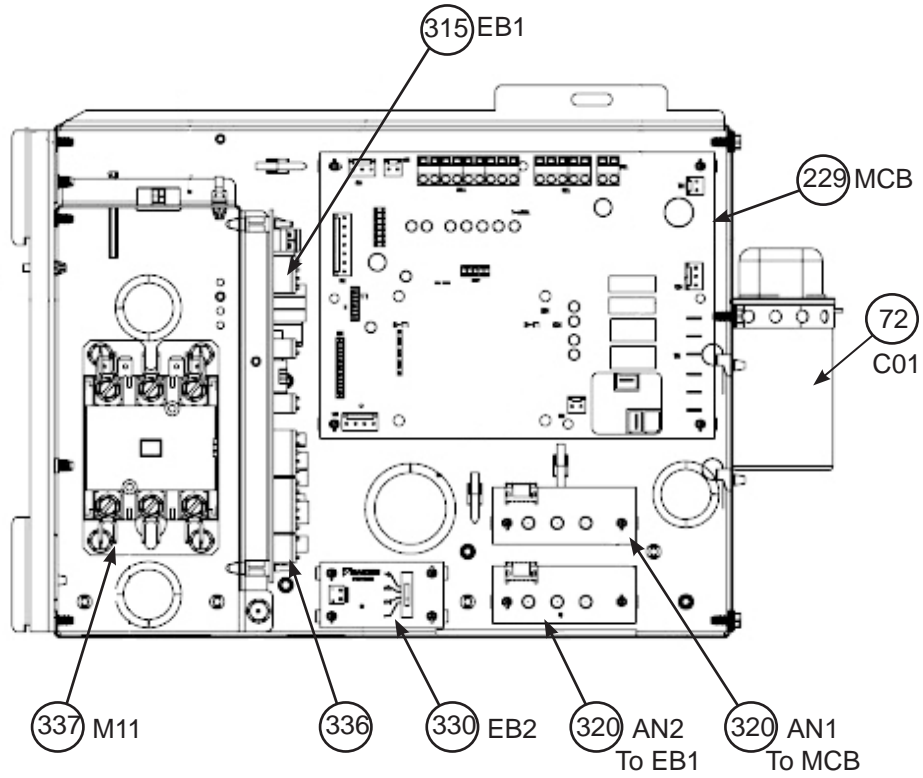
Ref. No.	Part Description	Part Number	Unit Size	
			024	030
110	Hot Gas Coil Assy, LH ¹	670209917	1	
		670209916		1
	Hot Gas Coil Assy, RH ¹	670209908	1	
		670209909		1
140	Check Valve, .5 ODS	910115254	1	1
160	Check Valve, Equalizer, .25 ODF	910171818	1	1
520	Reheat Valve, 2 Ton	910226302	1	1
530	Solenoid	910198415	1	1

¹ Please contact Daikin for E-Coat on HGRH coil assy.

Control Box

MicroTech III Controls

Diagrams



Control Box MicroTech III Controls Components





Ref. No.	Part Description	Part Number	Unit Size		
			024	030	
67	Bracket, Capacitor	850010570	1	1	
N/S	Boot, Capacitor Terminal Cover	910127697	1	1	
68	Capacitor, Compressor, 35MFD 440VAC	910120050	1		
	Capacitor, Compressor, 40MFD 440VAC	910120051	1	1	
72	Capacitor, Blower Motor, 7.5MFD, 370V	910120044	1	1	
229	Control Board, MicroTech III	668105601 ²	1	1	
315	I/O Expansion Board	668105702 ²	1	1	
320	LED Annunciator, AN1	668395201	1	1	
	LED Annunciator, AN2		1	1	
330	Fan Speed Selection Board	910143618	1	1	
335	Stand Off, PC Board	802028115	6	6	
336	Relay, 24V	106500102	1	1	
337	Contactor, 3P, 30A	until 12/17	910140340	1	1
	Contactor, 3P, 32A	12/17 & later	910199932	1	1
	Contactor, 2P, 30A	until 12/17	910140339	1	1
	Contactor, 2P, 32A	12/17 & later	910199934	1	1
N/S	Disconnect Switch, 10A	910150557	See footnote 1.		
	Disconnect Switch, 16A	910150558			
360	Transformer- 50V, 208-230V	910116202	1	1	
	Transformer- 50V, 265V	910116203	1	1	
	Transformer- 50V, 460V	910116205	1	1	
	Transformer- 75V, 208-230V	910116213	1	1	
	Transformer- 75V, 265V, 460V	910116209	1	1	
N/S	Suction Line Temp Sensor (LT)	910121228	1	1	
N/S	Air Temp Sensor (DAT, RAT)	910106325	1	1	
N/S	Water Temp Sensor (EWT, LWT)	910121231	1	1	

N/S= Not shown on diagram.

¹ The disconnect switch depends on the unit features. Use the As-Built BOM on Parts E-Commerce, or get the specs from the installed disconnect, or contact Daikin Applied Parts Identification.

² When ordering this board, please provide the software part number printed on the board's label. See control board photo on next page for label location.

Control Box MicroTech III Controls

MTIII Control Board Label Locations	
 <p style="text-align: right; margin-right: 20px;">Label</p>	 <p style="text-align: right; margin-right: 20px;">Label</p>
668105702	668105901
 <p style="text-align: right; margin-right: 20px;">Label</p>	 <p style="text-align: right; margin-right: 20px;">Label</p>
668105601	668105801

NOTE: When ordering the control board, please provide the software part number printed on the board's label.
See above for label locations.

Field Installed Accessories

Filters & Filter Racks

Description	Qty.	Part Number
1" Throwaway Filter	12 Pack	669814284
2" MERV 8 Filter	12 Pack	669814415
4" MERV 13 Filter	6 Pack	669814416
Filter Rack, 2"	1 Kit	910174051
Filter Rack, 4"	1 Kit	910174057

MicroTech III Communication Modules

Description	Part Number
BacNet Comm Module Kit ¹	910128889
LonWorks Comm Module Kit ¹	910128888

¹ Kit includes comm module card, sensors, mounting tabs, and IM.

Motorized Valve Wire Harness

Description	Part Number
MTIII, H-8 Wire Harness Assy, ISO Control Kit	910255908
MTIII, H-8 Wire Harness Assy, ISO Control Kit, 10 Pack	910145646

Manual Valves

Description	Size	Box of 2	Box of 10
Combination Shutoff/Balancing Valve with Memory Stop, Ball Valve	1/2"	106065202	106065210

Motorized Valves

Description	Kit ²	Actuator	Body
2-Way Valve Kit, Motorized, Normally Closed (NC), 3/4" NPT	910131354	910129596	910129297
2-Way Valve Kit, Motorized, Normally Closed (NC), 3/4" Sweat	910131360	910129596	910129294
2-Way Valve Kit, Motorized, Normally Open (NO), 3/4" NPT	910128987	910129299	910129297
2-Way Valve Kit, Motorized, Normally Open (NO), 3/4" Sweat	910131357	910129299	910129294

² Refer to IM 1151 for installing a motorized valve kit on MicroTech III units.

Field Installed Accessories

Continued

Thermostats & Sensors

Description	Part Number
3.75" x 5.5" Adaptor Plate ¹	910201987
5.25" x 7" Adaptor Plater ¹	910193064
5.3" x 5.3" Adaptor Plate ¹	910201988
RCN Kit for use with wireless Tstat	910107248
Programmable/ Non- Programmable, 2H/2C, AC, Touchscreen	910193126
Programmable/ Non- Programmable, 2H/2C, AC, Touchscreen, WIFI	910193131
Wall Stat: Non- Programmable, 2 Heat/2 Cool, ACO, Hardwired	910121746
Wall Stat: 7-day Programmable, 2 Heat/2 Cool, ACO, Hardwired	910121748
Wall Stat: Auto, Programmable Touch-Screen, 3 Heat/2 Cool, Humidity Detection	910121750
Wall Stat: Programmable & Remote Sensor	910116773
Wall Stat: AC/DC, ACO, 7-day Programmable, 2 Heat/2 Cool with Wall Plate	668375301
Wall Stat: AC/DC, ACO, Non- Programmable, 2 Heat/2 Cool, NSB & OR with Wall Plate	668375401
Trim Ring ¹	910193063
Insulated Wall Plate	910116770
Basic Room Sensor with NSB, Override and Status LED	910152149
Digital Adj. 4-Button Room Sensor with Override, Occupancy Switch and Temp. Display	910152147
Sensor with Cool/Warm Temp Adj. and Occupancy Override	910171464
Remote Sensor, Outdoor Temp for Touch Screen Thermostat ²	910129096
Remote Sensor, Indoor Temp for Touch Screen Thermostat ²	910129095
Wall Temp Sensor for 668375301 & 668375401	107096010
Wall Sensor, Adj. Cool/Warm, Occupancy Switch	910121753
Room Sensor, Digitally Adj., Temp & Humidity Display	910121754
Wall Temp Sensor, Daikin Branded ³	667720401

¹ For sensors p/ns 910121754, 910152147, 910152149 or 910171464.

² For use with thermostats # 910121750.

³ For use with thermostats # 910121746 & # 910121748.

TStat Guards

Description	Part Number
TStat Guard	105571101
TStat Guard (10 Pack)	105571110

Field Installed Accessories Continued

Waterside Economizer

Description	Part Number
3-Way Valve, Motorized, 3/4" Sweat	910167523
WSE Coil Assy	until 4/16
WSE Coil Assy	4/16 & later
Actuator Motor, NC, 24V	107179809

Hydronic Heat

Description	Part Number
Hydronic Coil Assy	670226303
Actuator, 24V	107179801

Electric Duct Heater Kit

Description	5 KW	10KW
208/230/60/1V	910128963	910128967
208/230/60/3V	910128964	910128968
265/60/1V	910128965	910128969
460/60/3V	910128966	910128970

Compressor Blanket

Description	Part Number
Compressor Blanket Kit	910221738

Field Installed Accessories

Continued

Hoses

Description	Specification	2 Foot	3 Foot
Hose Kit, Fire Rated Condensate	3/4"	106063801	106063901
Hose Kit, Plastic Condensate	3/4"	106063701	106665101
Hose Kit, Fire Rated Supply/Return (2 Pack)	3/4"	106062901	106063201
Auto Flow Supply and Return w/Ball Valves Flow Control Hose Kit, Fire Rated Supply/Return- 3/4" Includes: Supply Line: Ball valve with one port and a 24" stainless steel hose with swivel. Return Line: Combination flow controller & ball valve with two ports and a 24" stainless steel hose with swivel.	3.0 GPM	669482401	N/A
	3.5 GPM	669482402	N/A
	4.0 GPM	669482403	N/A
	4.5 GPM	669482404	N/A
	5.0 GPM	669482405	N/A
	5.5 GPM	669482406	N/A
	6.0 GPM	669482407	N/A
	6.5 GPM	669482408	N/A
	7.0 GPM	669482409	N/A
	7.5 GPM	669482410	N/A
	8.0 GPM	669482411	N/A
	9.0 GPM	669482412	N/A
10.0 GPM	669482413	N/A	
Auto Flow Supply and Return w/Ball Valves and Strainer Flow Control Hose Kit, Fire Rated Supply/Return- 3/4" Includes: Supply Line: Combination ball valve & y-strainer, blow down valve, with one port and a 24" stainless steel hose with swivel. Return Line: Combination flow controller & ball valve with two ports and a 24" stainless steel hose with swivel.	3.0 GPM	106582913	910157027
	3.5 GPM	106582914	910186316
	4.0 GPM	106582915	910157028
	4.5 GPM	106582916	910186317
	5.0 GPM	106582917	910182844
	5.5 GPM	106582918	910186318
	6.0 GPM	106582919	910157029
	6.5 GPM	106582920	910186319
	7.0 GPM	106582921	910157030
	7.5 GPM	106582922	910186433
	8.0 GPM	106582923	910182845
	9.0 GPM	106582924	910160448
10.0 GPM	106582925	910186434	
Hose Kit, Supply and Return w/Ball Valves	3/4"	669483501	669481402
Hose Kit, Supply and Return w/Ball Valves and Strainer	3/4"	669481901	669481902
Hose Kit, Jumper Hose Kit w/90° Adapter	3/4" x 4 Ft.	669483201	

N/A = Not Applicable.

Note: Refer to IM 1226 for Daikin Fire Rated Hoses & Hose Kits and for installation instructions.

Field Installed Accessories Continued

MicroTech III Temperature Sensors ¹

Part Number	Kit	Tenant Override	Setpoint Adjustment	Status LED	Fan & Mode Switch
669088101	669529001	Yes	No	No	No
668900801	669529101	Yes	55° to 95°F (12° to 35°C)	Yes	Yes
669088201	669529201	Yes	-3° to +3°F (-1.5° to 1.5°C)	No	Yes

¹ Note: Can only be used in conjunction with a communication (Comm.) card. See OM 931 for required jumper settings.

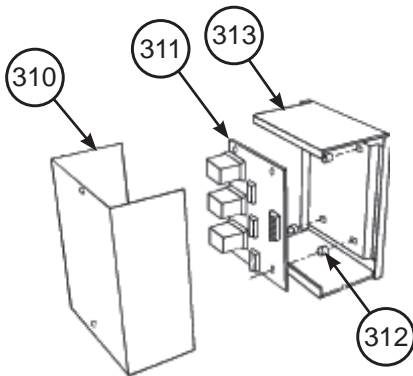
MicroTech III Unit Control Accessories

Description	Part Number
Multiple Unit Control Panel: Allows a master unit controlled by a T'Stat, to operate up to 3 secondary units Not Recommended for use with a Boilerless System Kit. ³	056794201
Boilerless System Kit with I/O Expansion Board ²	910110355
Boilerless System Kit without I/O Expansion Board	910110353

² IM 1084-2 is included in Kit.

³ Kit components listed below.

Multiple Unit Control Panel Kit



Ref. No.	Description	Part Number	Qty.
310	Cover, Control Box	106436101	1
311	Circuit Board	056794001	1
312	Stand Off, Circuit Board	802028090	6
313	Box	850007827	1

Critical Daikin Applied OEM Parts Are What Your HVAC Unit Needs!

Daikin SmartSource® Compact Vertical WSHP

WGCV

024, 030 Design 1

Critical Components	Unit Sizes	Voltage	Part Number
Control			
Control Board, MicroTech III	ALL	ALL	668105601
Compressor			
Compressor	024	208-230/60/1	668392101
Compressor	024	208-230/60/3	910124566
Compressor	024	265/60/1	668392102
Compressor	024	460/60/3	669816402
Compressor	030	208-230/60/1	669816403
Compressor	030	208-230/60/3	669816405
Compressor	030	265/60/1	910125402
Compressor	030	460/60/3	669816404
Blower Fan Motor			
Motor, 1/5 HP	024	208-230/60/1/3	910234773
Motor, 1/5 HP	024	265/60/1	910234771
Motor, 1/5 HP	024	460/60/3	910234772
Motor, 1/3 HP	030	208-230/60/1/3	910234777
Motor, 1/3 HP	030	265/60/1	910234774
Motor, 1/3 HP	030	460/60/3	910234776
EC Motor & Program	ALL	ALL	See motor nameplate
Blower Fan Assembly			
Blower Housing Assy	ALL	N/A	Q670212113
Wheel - Blower	ALL	N/A	802000037
Expansion Valve			
Expansion Valve (TXV)	024	ALL	910156333
Expansion Valve (TXV)	030	ALL	910157449
Sensor			
Suction Line Temp Sensor (SLTS)	ALL	N/A	910121228
Air Temp Sensor (DAT, RAT)	ALL	N/A	910106325
Water Temp Sensor (EWT, LWT)	ALL	N/A	910121231

Call Your Local Daikin Applied Parts Distributor For All Your Parts Needs.
To Locate A Distributor, Go To www.DaikinApplied.com or Call 1-800-37PARTS